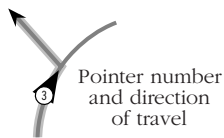


# Budget WorldClass Drives

## CHIANG MAI - THE GOLDEN TRIANGLE LOOP

### INSTRUCTIONS

Go this way



**N**umbered pointers listed in sequence in the direction of travel show you when you have to make turns along the recommended route. Some turns at junctions (where English language signs are absent) will also include descriptions to help you visually check you go in the correct direction

#### Kilometre references are noted in two ways:

H107 KM13 = Kilometre stone 13 is the nearest kilometre marker on Highway 107.

OdK13 = Kilometre 13 estimated by vehicle odometer (allow for variation).

*KM99* A point of interest or side trip off the route is located near this kilometre point.

*Zero odometer (reset odometer to zero)!* Most main roads have kilometre stones and bilingual signs, but sometimes they are missing, and small country roads usually have no stones or signs in English. Reset your odometer (kilometre distance gauge) to zero to help you follow directions when you see this instruction.

*Fill up with petrol!* Remote country roads have no filling stations, or only serve fuel from a drum (more expensive). Fill up with petrol at the point of instruction to avoid running out of fuel later on the recommended route.

*Alternative route. (AR)* There are many roads to travel in Thailand. The direction pointers follow recommended routes that aim to give you a variety of roads and scenery where possible. *Alternative route directions* show you where you may take your own route using information found only on the maps. Shorter alternative routes are usually less interesting than the recommended route.

*4 WD Only!* If you are driving a vehicle that does not have 4 four wheel drive, please do not take this route. Follow the *alternative route* suggested along a sealed highway.

*Remember to always take enough drinking water - allow for emergencies*

*Accommodation.* Upper and middle level places to stay are listed with telephone numbers. Guest House style accommodation is plentiful in the main towns and is shown on maps in rural areas. We strongly advise pre-booking accommodation in the high season and during festivals.

In order that we may continually improve our service to our customers, please advise us of errors or make suggestions for these route information sheets. You may do so to our office staff or directly to <oliverh@loxinfo.co.th>



#### ROADS, SIGNS AND KILOMETRE STONES

All main and most minor roads are sealed. Warning signs and reflective arrows mark sharp corners, while temporary signs mark hazards like landslides and road works. Main intersections are illuminated with sodium lighting. The government is firmly in control of the whole country and there are no security problems.

Bilingual (English/Thai) road signs indicate destinations and route numbers before intersections, and show the road number and the distance to the next main destination after the intersection. Kilometre stones show the road number and distance the road on the front face. Distances to the next destination in the direction of travel are found on the side of the stone.

**Emergency Assistance Tel: (02) 256-7145**



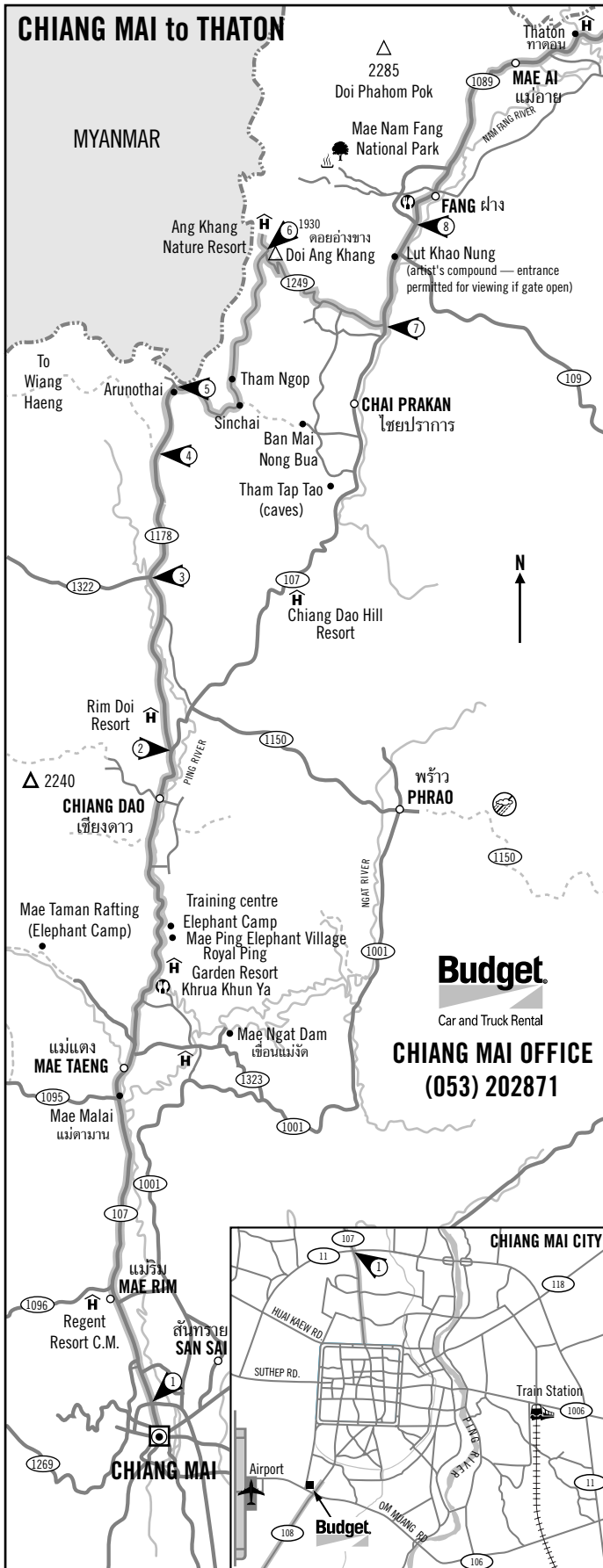
#### SYMBOL LIST

Main Road	Unsealed Road	Suggested Routes	Kilometre 100
Minor Road	River	Province	Temple
District	Pointer	Traffic Lights	Park
			Water Fall
			Hot Springs.
			Hotel/Resort/Guest House
			Hospital
			Gas Station
			Restaurant

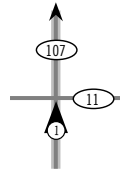
**Budget**

**SECTION 1 : 218 kms.**

# CHIANG MAI THATON



### 1 POINTER ONE



H107 KM4 Take Highway 107 to Mae Rim and Chiang Dao, starting at the intersection of Chiang Mai- Lampang Superhighway and H107 to Mae Rim and Chiang Dao

KM17 Highway 1096 west to Samoeng and the Mae Sa Valley. Orchid Farms, elephant camps, the Queen Sirikit Botanical Gardens, Upland Resorts and Hmong Hilltribe villages.

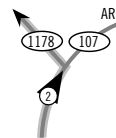
KM28 Mae Sa Snake Farm (Branch). 30 min. shows 09:30-17:00

KM53 Mae Ping Elephant Village: Shows 08:30 & 10:00 + rides to Lisu hilltribe village

KM56 Elephant Training Centre: Shows 09:00 & 10:00 + rides to Lisu hilltribe village

KM72 Chiang Dao Inn and road west to caves (5 & 8 kms). Khrua Chiang Dao restaurant opposite

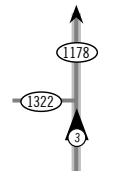
### 2 POINTER TWO



H107 KM78 Turn left on H1178 signposted Wiang Haeng. *Zero your odometer* & follow blue signs for Ang Khang Nature Resort along this route. (For a *shorter direct route* continue on H107 to P7 and Thaton. Total distance from Chiang Mai 173kms).

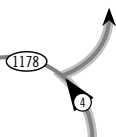
KM4 Naresuan monument commemorates death of King Naresuan in 1605

### 3 POINTER THREE



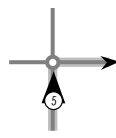
H1178 KM9 Go straight to Ban Na Wai at T-junction. (H1322 goes west to Wiang Haeng).

### 4 POINTER FOUR



H1178 OdK33 Turn right to Ban Arunothai at T-junction.

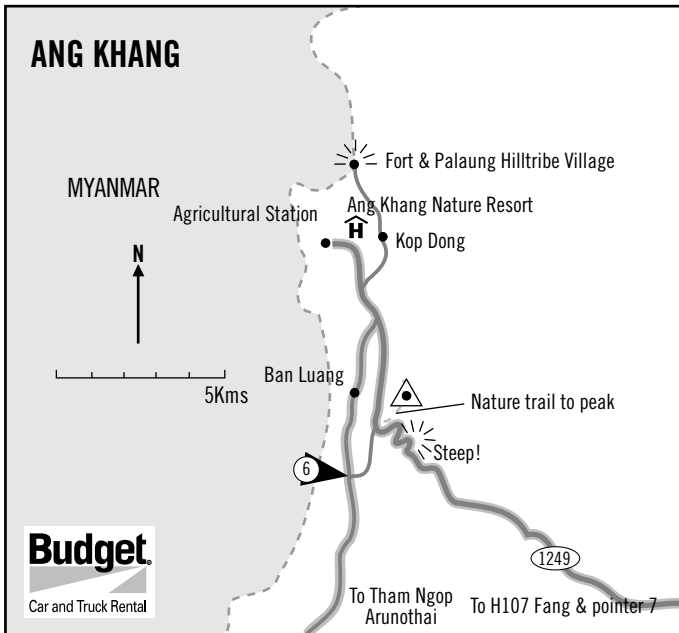
### 5 POINTER FIVE



H1178 OdK42 After military checkpoint turn right at intersection in Ban Arunothai and follow rough road leading east out of town. *Set odometer to zero!* Road improves outside of town. Steep climbs and tight turns on narrow sealed road begin after KM6.

KM16 Ban Tham Ngop; former HQ of Kuomintang 3rd army under Gen Li Wen-huan

OdK19 Lahu (Muser) hilltribe village on south side of road



**6 POINTER SIX**  
 KM35 Take lower (left) road to Ang Khang at the road fork. The upper (right) road leads to H1249 at KM19 (See Ang Khang detail map).  
 Return on H1249 to H107 - *caution on very steep descent!*

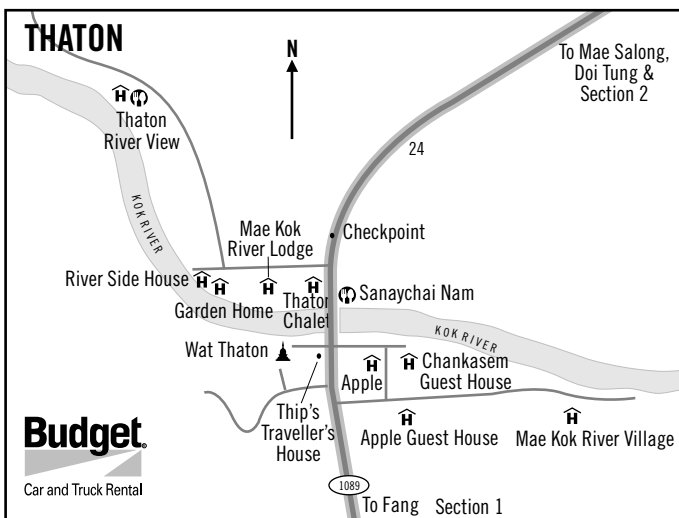
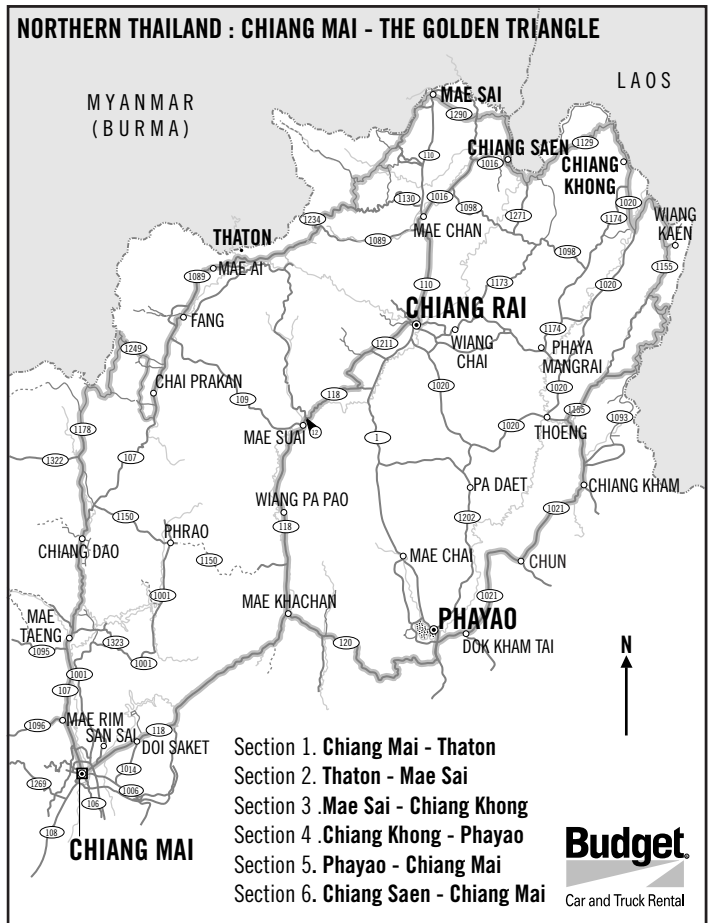
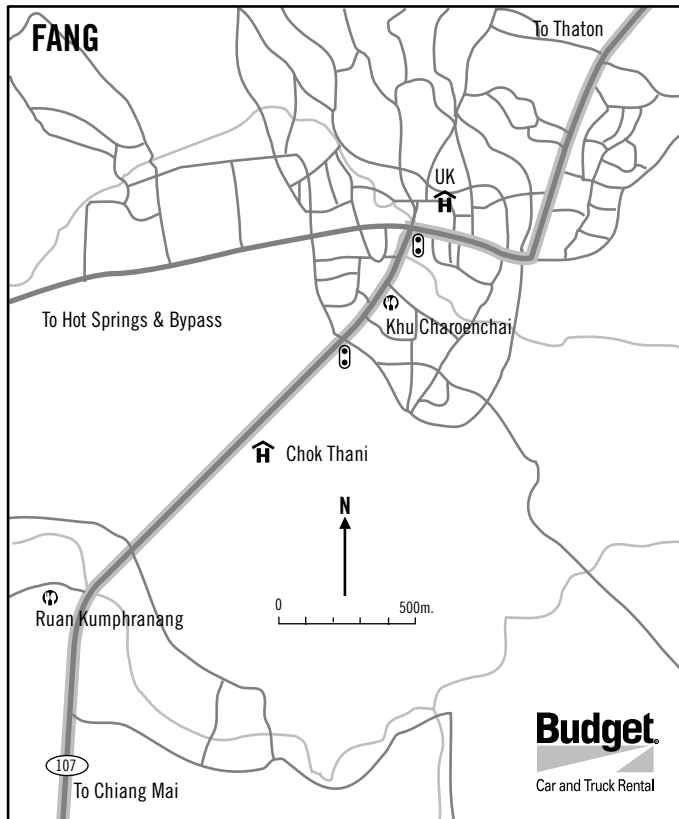
**7 POINTER SEVEN**  
 H107 KM137 T-junction. H1089 joins H107. Turn left (north) onto H107

**8 POINTER EIGHT**  
 H107 KM148 T-junction with bypass. Continue straight to go through Fang (see detail map) or take bypass which joins H1089 at KM4

Fill petrol tank in Thaton area

### ACCOMMODATION

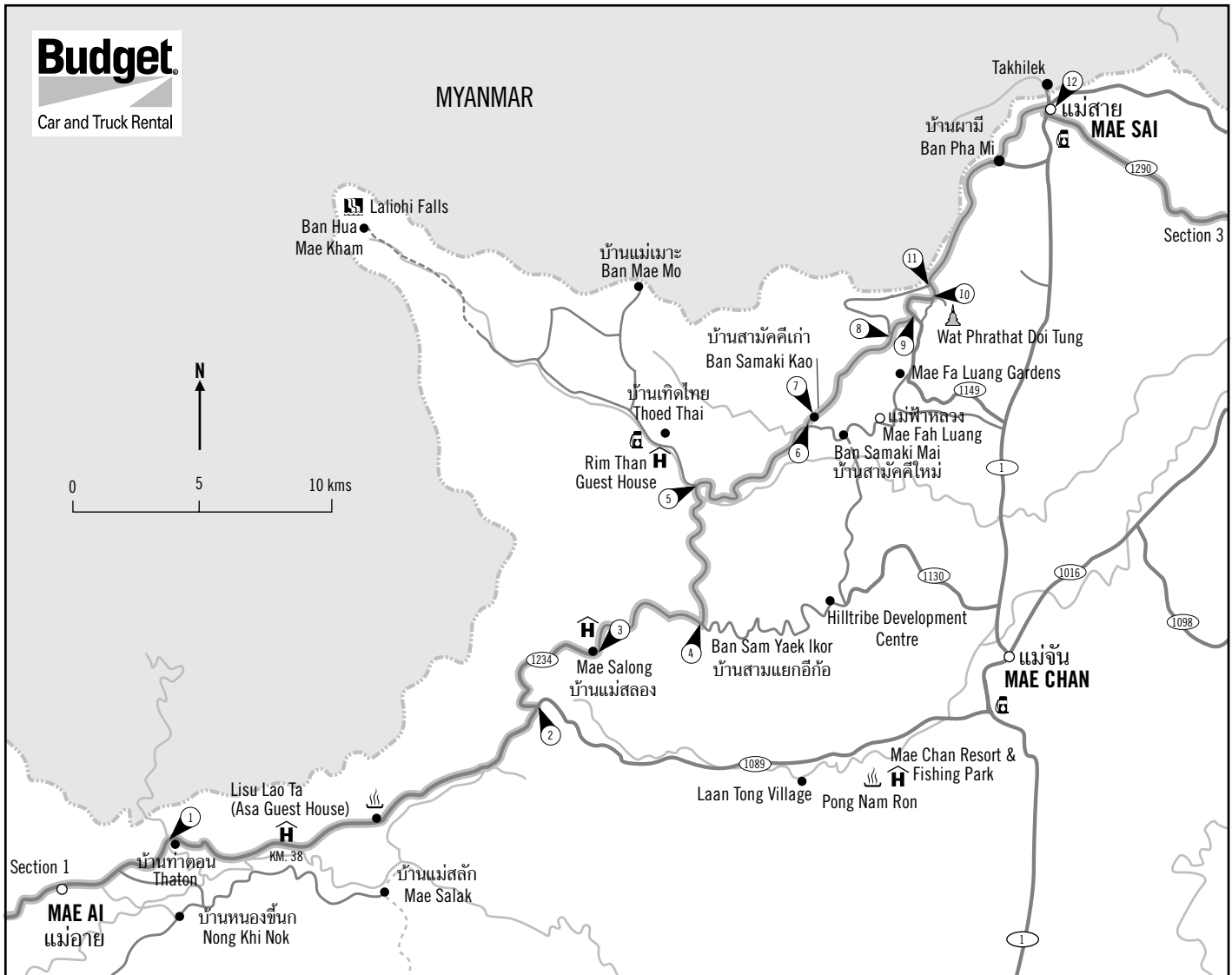
- Regent Resort, Mae Rim (053) 298181 Fax: 298189
- Ang Khang Nature Resort, Ang Khang (053) 453 515-19 Fax: 453 520
- Chiang Dao Inn Hotel, Chiang Dao. Tel: 455132
- Chiang Dao Hill Resort M (H107 KM100) M (053) 232434 Fax: 251372
- Mae Kok River Lodge & Village, Thaton (053) 459328 Fax: 459329 (Lodge) 459355 (Village)
- Thaton Chalet. Thaton (053) 373155-7 Fax: 373158
- Thaton River View Hotel. Thaton (053) 459289 Fax: 459288



**Budget**

**SECTION 2 : 115 kms.**

# THATON MAE SAI



### 1 POINTER ONE

H1089 KM24. Leave Thaton northbound. Mae Salong 43, Mae Chan 62 *Fill Petrol tank before KM38!*

KM38 Left turn (west) up concrete lane to wealthy Lisu village of Lao Ta.

KM53 Akha hilltribe village on east side (many Akha villages throughout this area).

### 2 POINTER TWO

H1089 KM54 Left turn (west) on H1234/1089 to Mae Salong. (Continue straight on H1089 for faster direct route to Mai Sai via Mae Chan-Thaton-Mae Sai total distance 97 kms.)

### 3 POINTER THREE

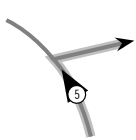
H1089/1234 KM 30 Go straight through Mae Salong, former HQ of remnants of Gen Tuan Shi-wens 5th Kuomintang army. (see detail map)

*Caution : narrow roads, sharp bends and steep gradients are frequent on the rest of this section.*

KM13 Concrete lane west to Akha village of Ban Ameh

### 4 POINTER FOUR

H1234 KM9 Ban Sam Yaek Ikor. Right turn (north) at T junction with H1130 to Thoed Thai. *Zero odometer!*



### 5 POINTER FIVE

OdK 8-9 v sharp right turn on narrow sealed road. After almost 1 km you will cross a narrow bridge near ornate Chinese building and go through village. After the bridge, the road follows a river to the right (east side).



### 6 POINTER SIX

OdK20 T junction. Turn Left (north) The right turn for Doi Tung is a longer route with many twists and turns.



### 7 POINTER SEVEN

OdK21 T-junction at Ban Samakhi Kao (Akha). Turn left (north) and follow narrow road.

OdK40 Ban Huai Pu Mai - Lahu (Muser) village



### 8 POINTER EIGHT

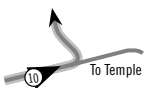
OdK27 T-junction - continue straight for Ban Huai Khrai, Ban Pha Bur and junction with H1149.

### 9 POINTER NINE



OdK 36 T-junction with H1149 Turn left (west) to Phrathat Doi Tung (7kms) and Mae Sai (26 kms). Go right (downhill) to visit Mae Fah Luang Gardens (4 kms).

### 10 POINTER TEN



H1149 OdK42 bears left (north) uphill at junction with road going right to Phrathat Doi Tung (Mae Sai 21 kms). Go straight to visit interesting Buddhist temple. Note animistic Buddhist site near entrance to temple compound with twin pagoda.



### 11 POINTER ELEVEN

OdK43 Doi Chang Mup. Go straight (right fork) by entrance to 60 rai garden with azalias and rhododendron. Road descends along the border with Myanmar (Shan State) from this point.

OdK68 Right turn (east) to Ban Pha Mi - Akha and Lahu villages and alternative route to H110.

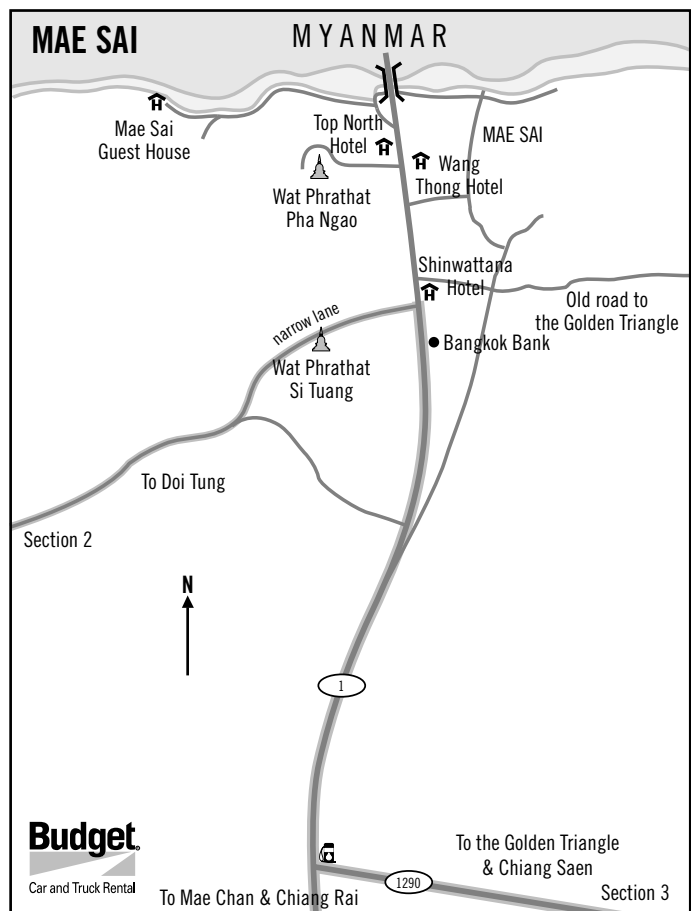
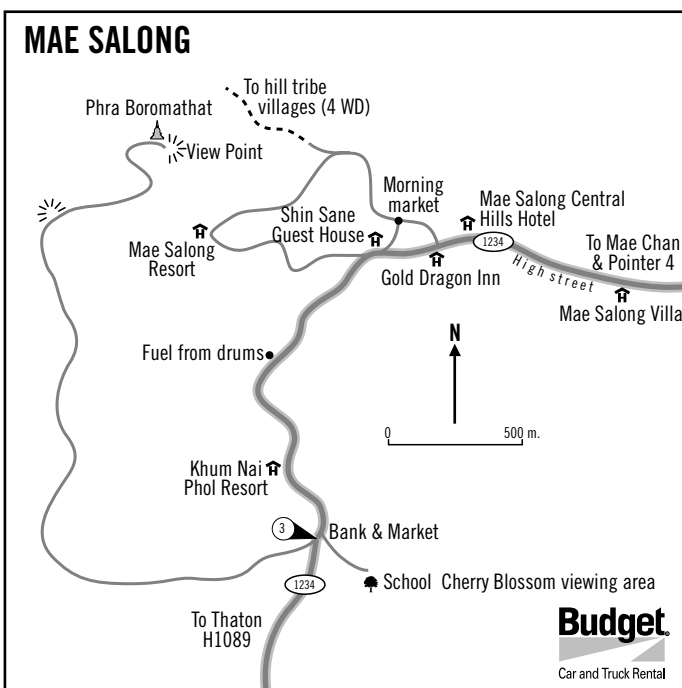


### 12 POINTER TWELVE

OdK63 Arrive at T junction with H1 KM890 in Mae Sai (See Mae Sai detail Map)

## ACCOMMODATION

- Kum Nai Phol Resort, Mae Salong. Tel: (053) 765001-2 Fax: 765003
- Mae Salong Resort, Mae Salong. Tel: (053) 765014-8 Fax: 765135
- Mae Salong Villa, Mae Salong. Tel: (053) 7651149 Fax:765039
- Wang Thong Hotel, Mae Sai. Tel: (053) 733388-95 Fax:765039

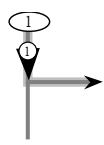
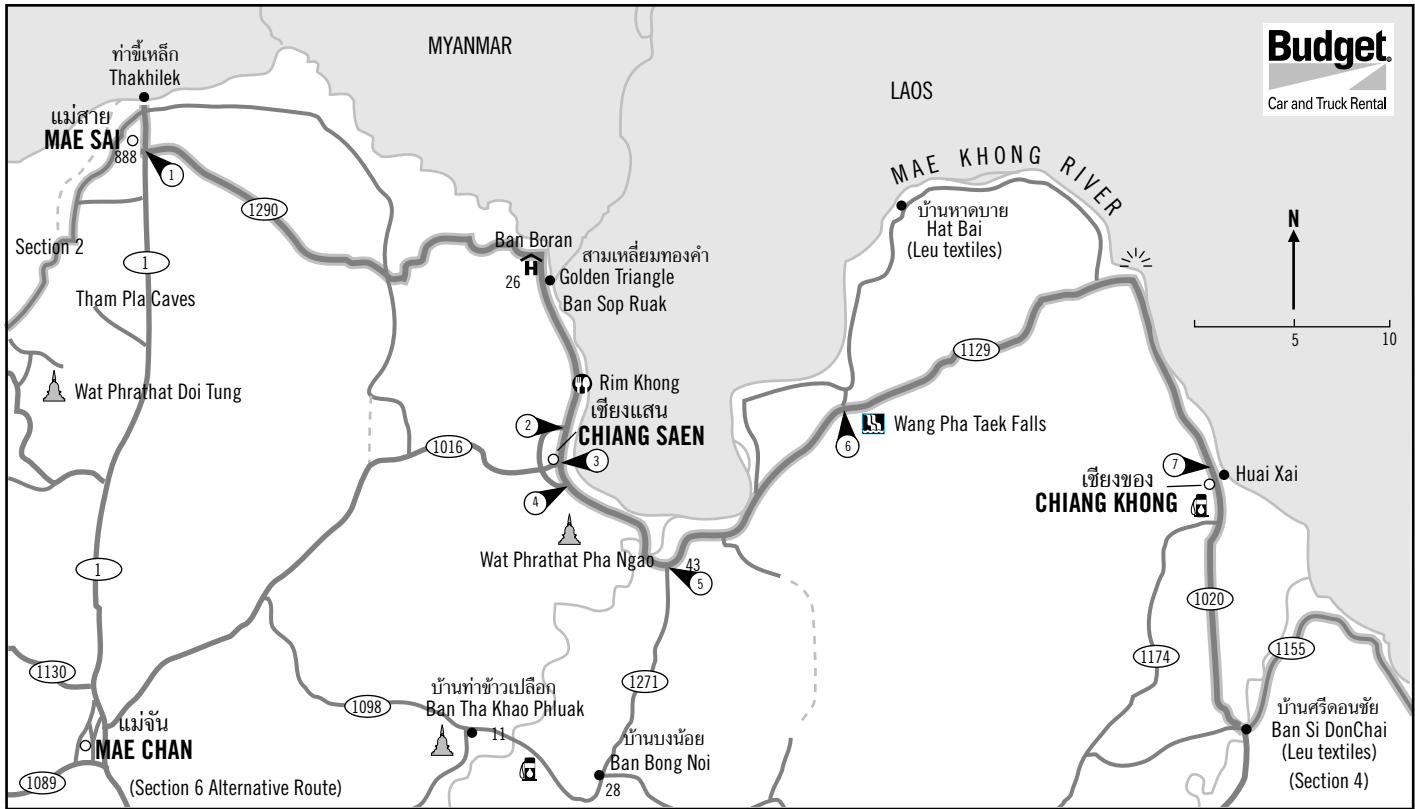




**Budget**

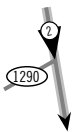
**SECTION 3 : 89 kms.**

# MAE SAI CHIANG KHONG

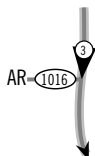


**1 POINTER ONE**  
 Leave Mae Sai south on H1 and turn left (east) on H1290 to the Golden Triangle and Chiang Saen (37 kms.)

KM28 Ban Sop Ruak / Golden Triangle. House of Opium Private Museum in car park by right turn up hill to Wat Phrathat Phukao and lookout over Golden Triangle.

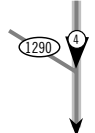


**2 POINTER TWO**  
 H1290 KM35 Go straight to Chiang Saen avoiding H1290 bypass (See Chiang Saen detail map).

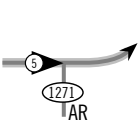


**3 POINTER THREE**  
 H1129 KM53 T-junction with H1016 to Mae Chan (Start of alternative fast return route to Chiang Mai via Chiang Rai using main highways 1016 — see section 6 Chiang Saen - Chiang Mai). Go straight for Chiang Khong.

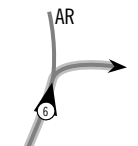
KM50 (west side) Wat Phrathat Pha Ngao & view from Stupa on hill.



**4 POINTER FOUR**  
 H1129 KM52 Go straight. Bypass (H1290) rejoins H1129

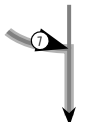


**5 POINTER FIVE**  
 H1129 KM44 T-junction with H1271. (Take H1271 for alternative rural return routes to Chiang Rai on H1173 via Wiang Chai, or H1209 via Tha Khao Pluak — see section 6 ).

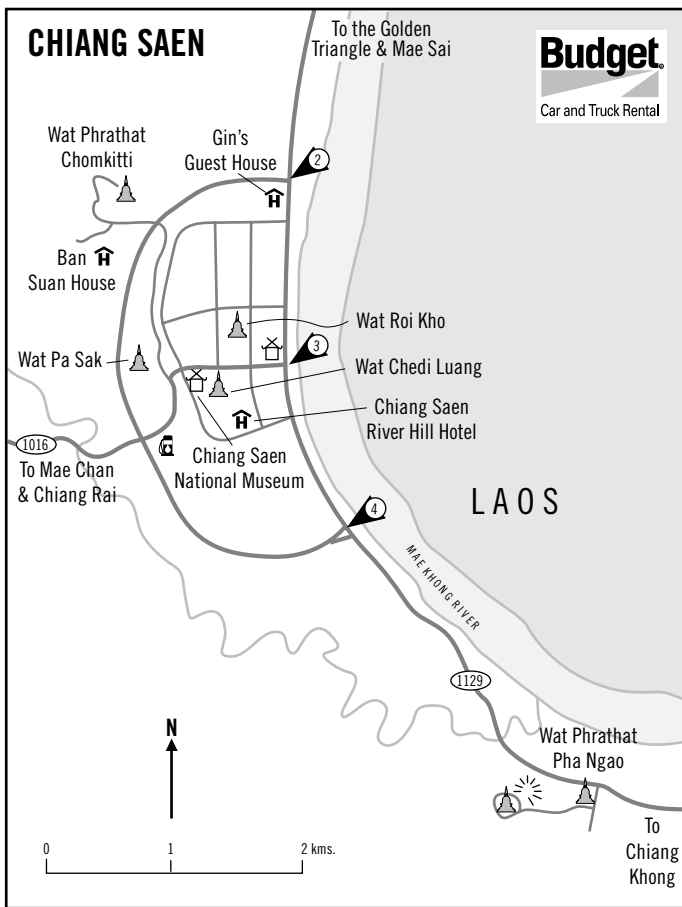


**6 POINTER SIX**  
 H1129 KM30 Follow main road right at bend (or go straight ahead for alternative rural route following River Mekong via Hat Bai village to Chiang Khong on minor road. Rejoins H1129 at KM13).

KM25 Right turn (south) for Nam Tok Wang Pha Taek - evergreen gully with modest cascades  
 KM19 Ban Kiu Kan. White Hmong hilltribe village  
 KM11 Viewpoint.

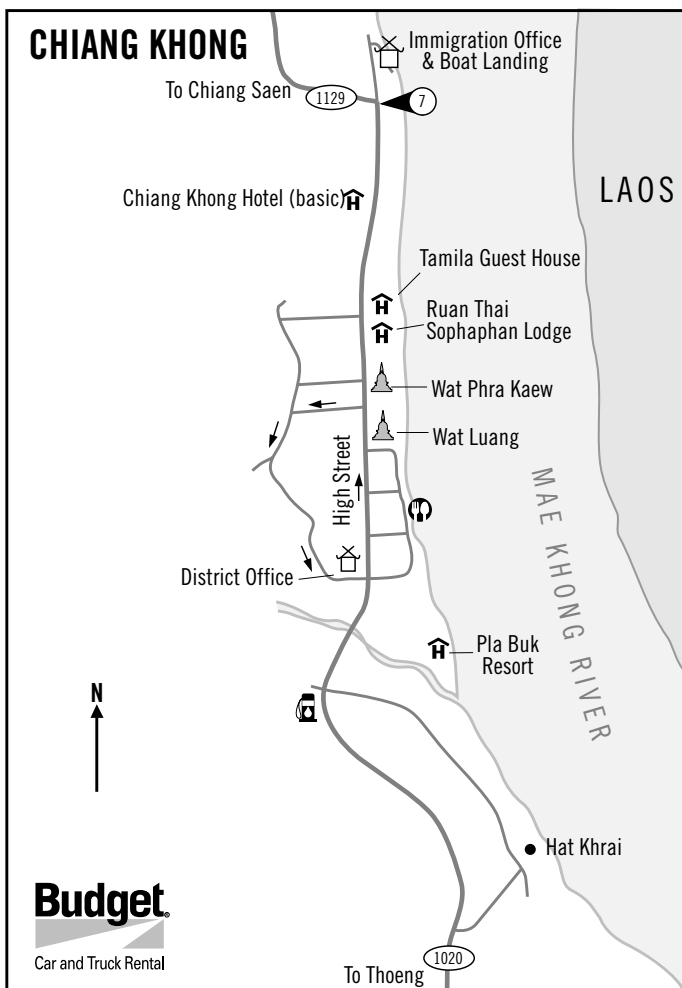


**7 POINTER SEVEN**  
 H1129 KM0 T-junction. Turn right (south) onto main street in Chiang Khong (see detail map)



## ACCOMMODATION

- Le Meridien Ban Boran, Golden Triangle (Ban Sop Ruak). Tel: (053) 784086 Fax: 784090
- The Imperial Golden Triangle, Golden Triangle. Tel: (053) 784001-5 Fax: 784006
- Chiang Saen River Hill, Chiang Saen. Tel: (053) 650826-9 Fax: 650830
- Guest House style accommodation only in Chiang Khong



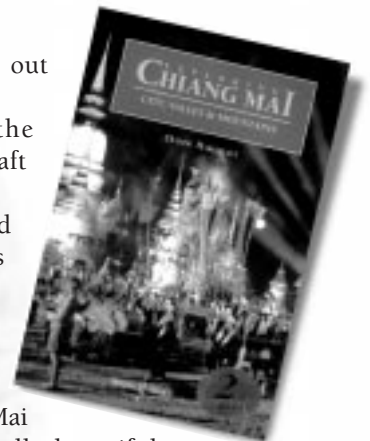
Make the most of Chiang Mai with

## EXPLORING CHIANG MAI

CITY, VALLEY & MOUNTAINS

"An impressive range of photographs and illustrations, plus elegant and useful maps.... The information.... is concise, well-presented and up-to-date." *Yada Datu in The Nation*

- ★ Self-drive tours out of the city
- ★ On and off the beaten handicraft track
- ★ Good food and quiet moments at country resorts and lots, lots more



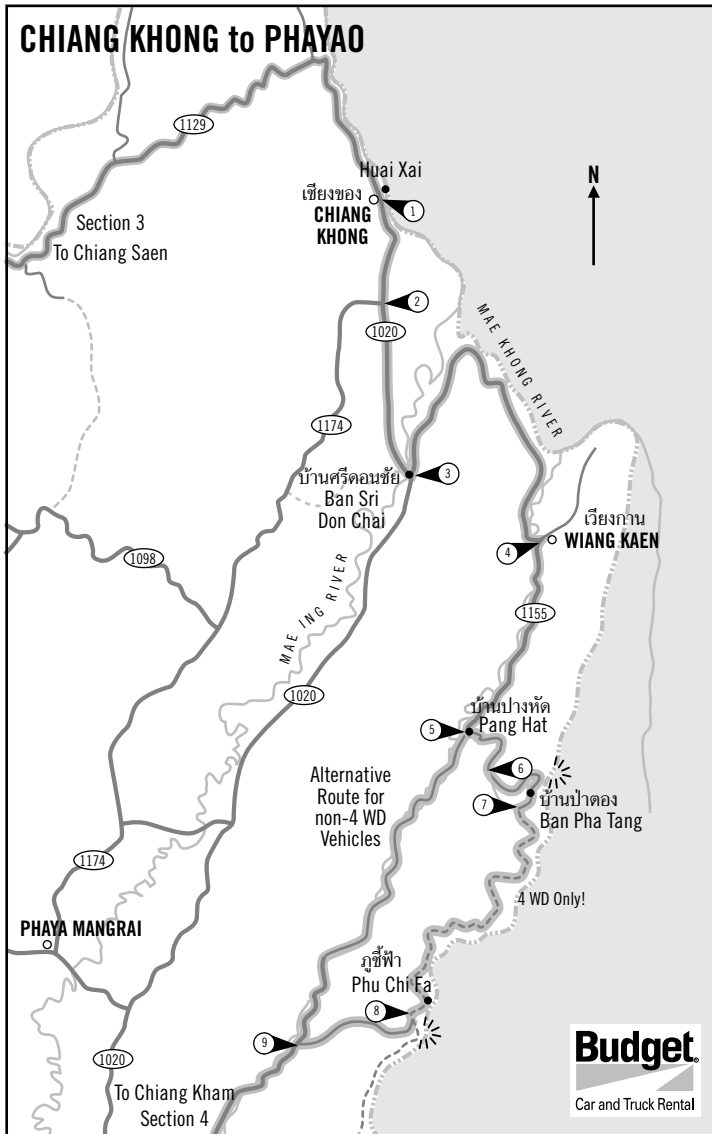
"Exploring Chiang Mai is not only a visually beautiful guide, it also answers just about every question a visitor could have." *Sarah Brown in the Bangkok Post*

Contact Budget staff for a special offer to Budget customers

**Budget**

# CHIANG KHONG PHAYAO

SECTION 4 : 225 kms.



### 1 POINTER ONE

H1020 OdK 38 Leave Chiang Khong on main highway south. *Fill petrol tank!*

### 2 POINTER TWO

H1020 KM132 Go straight at T-junction with H1174 (*alternative route to Chiang Rai*).

### 3 POINTER THREE

H1020 KM123 Ban Si Don Chai. Turn left (east) at T-junction with H1155. *Zero odometer*. (Continue straight on H1020 for *alternative return route* along River Ing valley).

### 4 POINTER FOUR

H1155 OdK26 T junction. Take right turn south signposted Doi Pha Tang & Phu Chi Fa.

### 5 POINTER FIVE

H1155 OdK42 Ban Pang Hat. *4WD only past P7!* Turn left (east) at T-junction with narrow sealed road. H1155 (pitted sealed surface from OdK38) curves right round school yard. A small police box at the junction has 'information' in English on it. *Zero odometer*. *If you do not have 4WD*, you may drive up sealed road to see spectacular view over the Mekong valley in Laos at Doi Pha Tang, but you must return to this point (round trip 30 kms) and continue straight to Ban Pha Le on H1155 (*See pointer 9*).

### 6 POINTER SIX

OdK10 Road forks. Take lower fork left. (*See Doi Pha Tang detail map*).

### 7 POINTER SEVEN

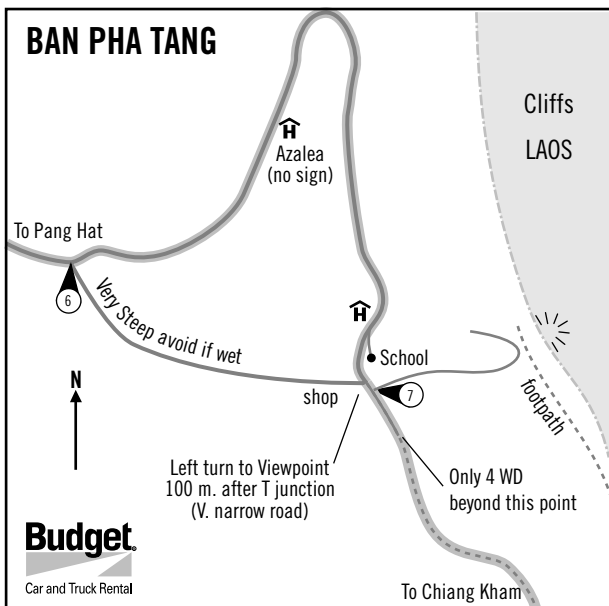
OdK14 Follow road round to left at T-junction.

Villages along this route have been built by the government for White Hmong who act as volunteer border defense forces in case of trouble with Laos. *4WD only!*

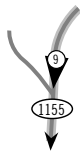
OdK41 Left turn (east) steep uphill to Phu Chi Fah look-out. Very steep and rough 4WD (2 kms) – impassable if wet. Better to walk.

### 8 POINTER EIGHT

OdK43 Take right turn descending to valley to rejoin H1155. (Or continue left – east – for *longer alternative route* – 52 kms – to H1021 via Phu Sang Falls and H1093, which joins H1021 at KM80).



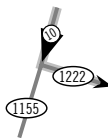




**9 POINTER NINE**

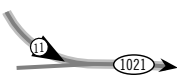
OdK53 junction with H1155 at KM26, continue south. If coming south on H1155 in non-4WD vehicle, turn sharp left for easy sealed road to

Phu Chi Fah lookout over Laos, but you will need to walk up 4 kms.



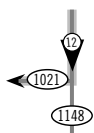
**10 POINTER TEN**

H1155 KM6 Turn left (east) at T-junction with H1222.



**11 POINTER ELEVEN**

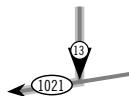
H1222 T-junction with H1021 KM94. Follow signs to Phayao (97kms)



**12 POINTER TWELVE**

H1021 KM75 Right turn at T junction. H1148 goes to Chiang Kham.

KM74 Left turn (east) Thai Leu Cultural Centre.

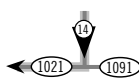


**13 POINTER THIRTEEN**

H1021 KM72 Right turn to Phayao.

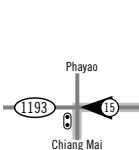
**DRIVING ON DIRT ROADS**

Dirt Roads go all over the mountains, but even Thais can get lost in the maze of crossroads. The tracks are steep and narrow and very tricky in the rainy season. If you plan an overnight trip on a dirt road trip take the following: torch, candles and matches, warm clothes (especially in winter), water, dry food, insect repellent, and a full tank of gas. Drive very slowly to prevent mechanical problems from stranding you.



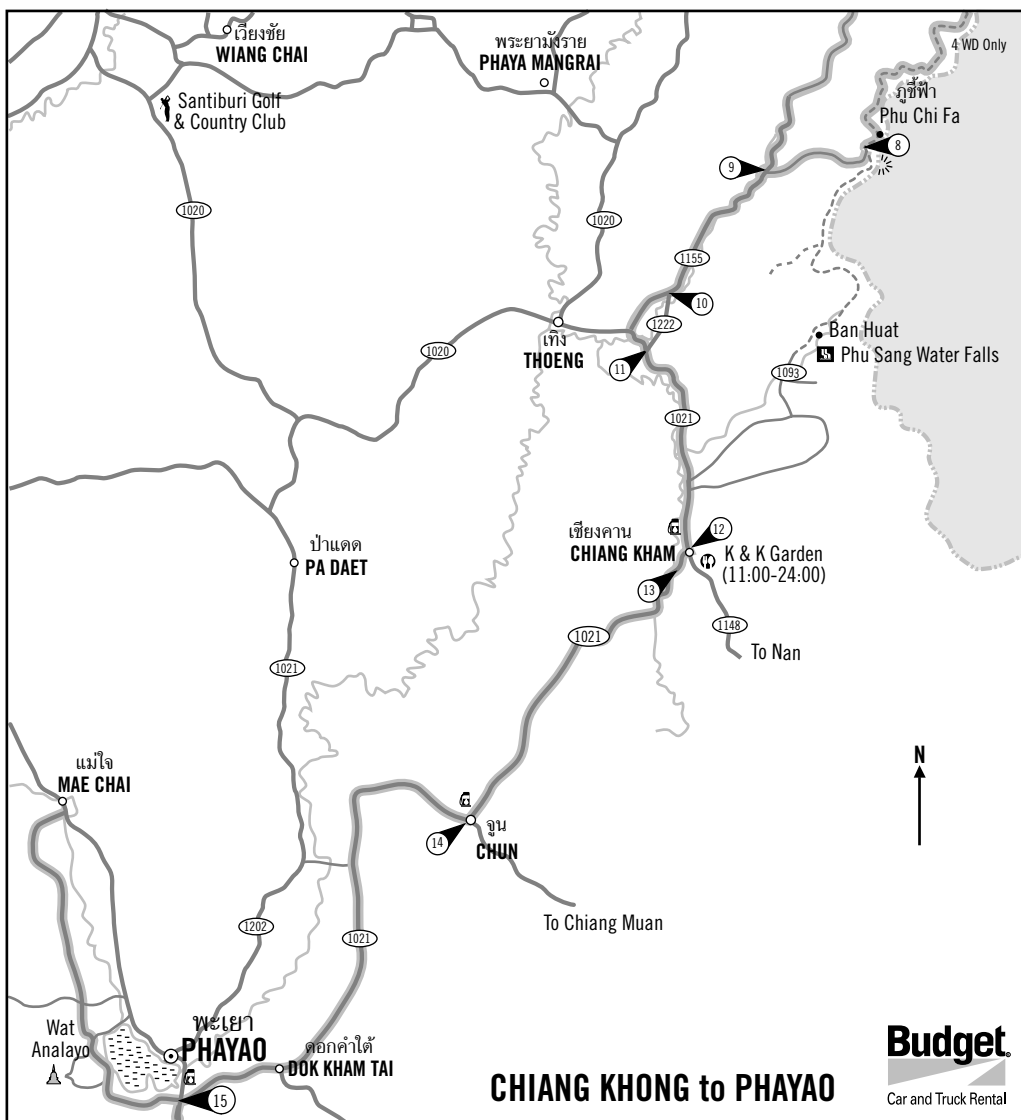
**14 POINTER FOURTEEN**

H1021 KM42 T junction with H1091in Chun District town. Turn right for Phayao (45kms)



**15 POINTER FIFTEEN**

H1021 controlled intersection with H1 KM732. Turn right (north) for Phayao and left for Lampang and Chiang Mai (via H120). Straight on for Mae Na Rua on H1193.



**ACCOMMODATION**

- Azalia Garden Resort, Doi Pha Tang. Tel: 01 9503948. Advance call necessary to take advantage of price that includes evening meal and breakfast in Guest House style accommodation.
- Phayao Northern Lake Hotel. Tel:(054) 481538-9

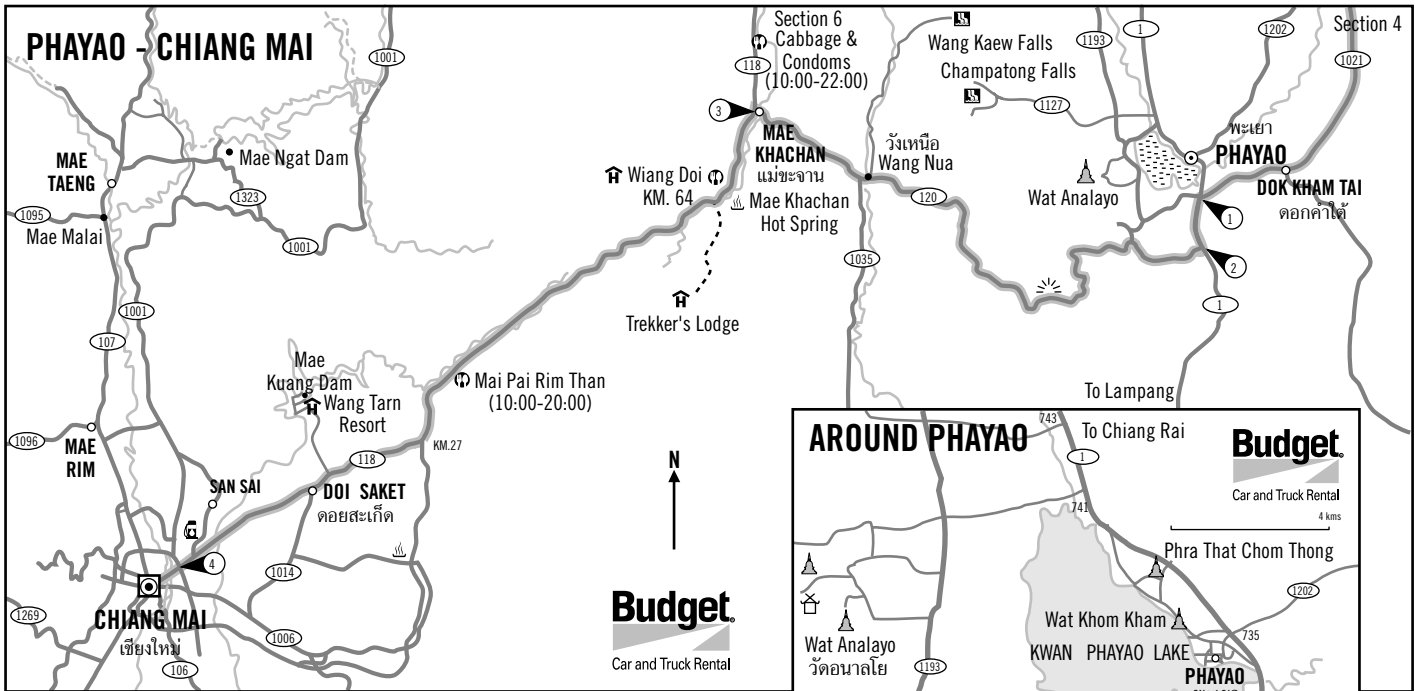


**Budget**  
Car and Truck Rental

**Budget**

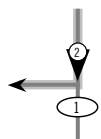
**SECTION 5 : 150 kms.**

# PHAYAO CHIANG MAI



### 1 POINTER ONE

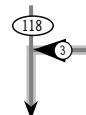
H1KM732. Turn north for Phayao and route round lake via Wat Analayo (See detail maps) or turn south for direct route to Chiang Mai.



### 2 POINTER TWO

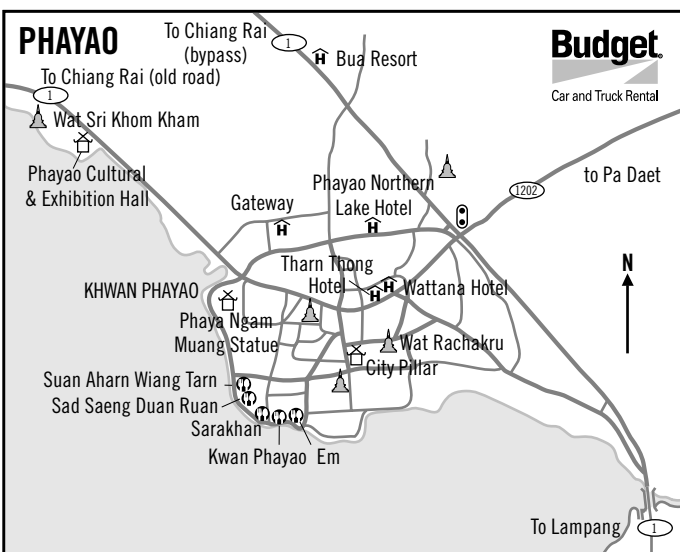
H1KM727 Right turn (west) at T-junction of H120 to Chiang Mai (145kms) via Wang Nua

KM19 Viewpoint  
 KM 47 Wang Nua. Right turn (north) to Wang Kaew waterfalls (24 kms)



### 3 POINTER THREE

H120 KM78 Left turn (south) at T-junction with H118. Chiang Mai 81 kms.



KM72 basketware market  
 KM62 Mae Khachan hot springs — another roadside tourist attraction. Restaurant at Wiang Doi Cottage opposite  
 KM63 left turn (east) 4WD only! to Ban Huai Muang and upland valley with Lahu Villages (9kms). Trekkers Lodge offers rustic accommodation.  
 KM16 right turn (west) to Wang Tarn Resort (6kms)  
 KM16/14. left turn (east) to Wat Doi Saket — unusual temple murals

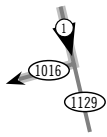
### 4 POINTER FOUR

H118 intersects with H11 The Chiang Mai Lampang Super-highway. Welcome back to Chiang Mai.

**Budget**

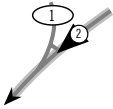
**SECTION 6 : 240 kms.**

# CHIANG SAEN CHIANG MAI



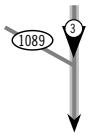
### 1 POINTER ONE

Start at T-junction of H1129 with H1016 to Mae Chan on direct return route to Chiang Rai and Chiang Mai



### 2 POINTER TWO

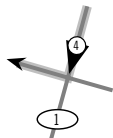
Go straight at junction with H1 to Chiang Rai at KM858



### 3 POINTER THREE

H1KM856 Go straight at junction with 1089 to Thaton & Fang (alternative return route - see sections 2 & 1)

KM838 right turn to Phong Phabat Falls (8kms).  
KM835 left turn to Chiang Rai airport  
KM831 bridge over Nam Khong river - see Chiang Rai detail map

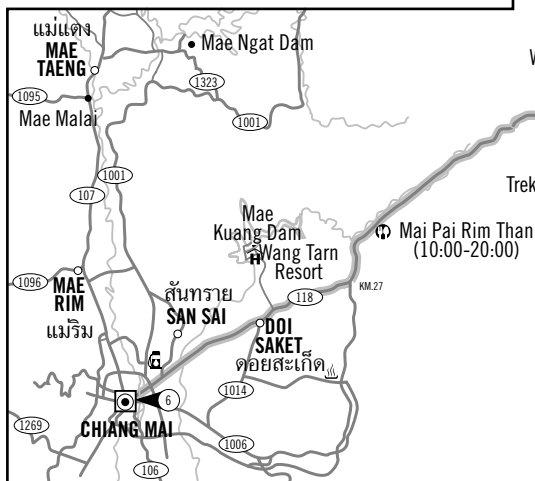
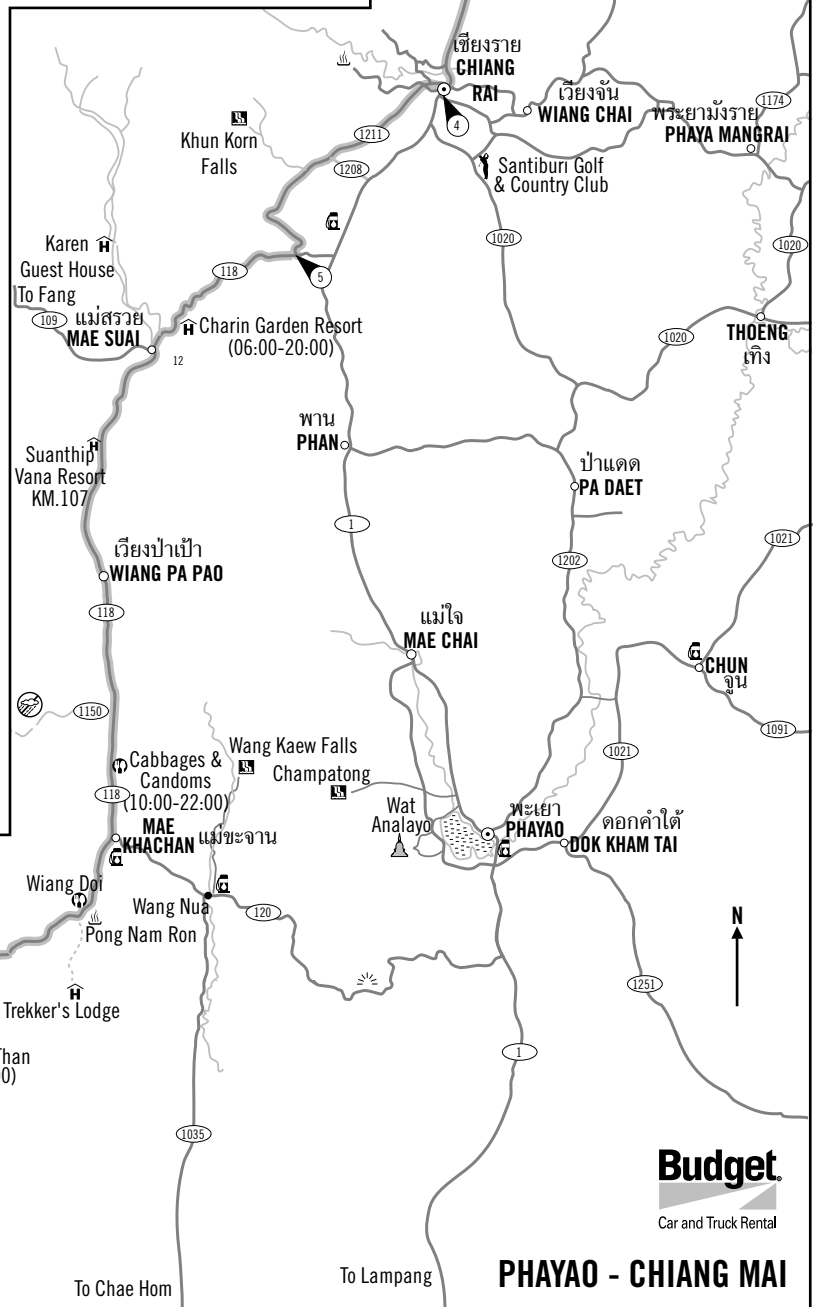
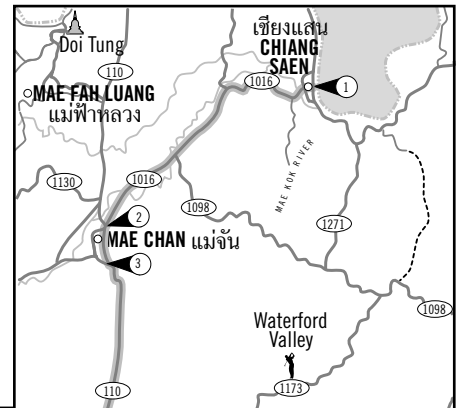


### 4 POINTER FOUR

KM830 intersection near the Mangrai monument (east side). For fast return go straight on H1 south until KM807 and take right turn to Mae Suai on H118.

For return via H1211 turn right at the sign for the City Hall. Keep straight on this road and in this direction of travel. You will cross intersections and pass the market and a large fat Sankhachai Buddha by Wat Mun Muang, eventually joining another road. Go straight at the sign (left Chiang Rai Hospital & right Chiang Rai Beach). You are now on H1211. (See Chiang Rai detail map).

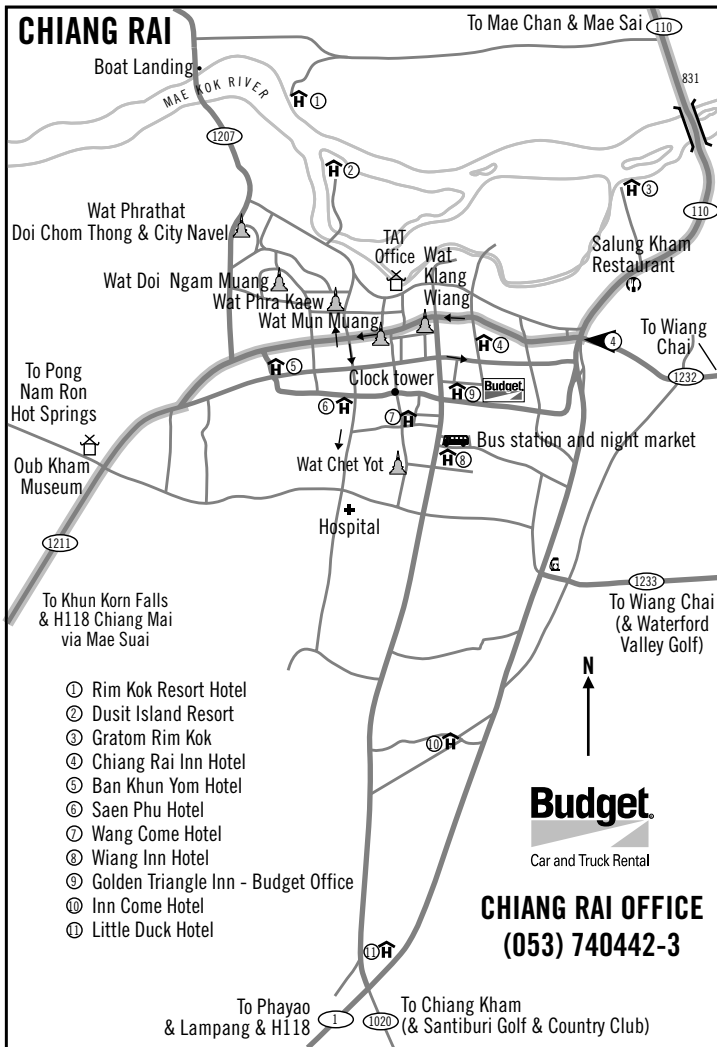
H1211 KM14-15 H1208 right turn for Khun Korn Falls (12 kms)



**Budget**

Car and Truck Rental

**PHAYAO - CHIANG MAI**



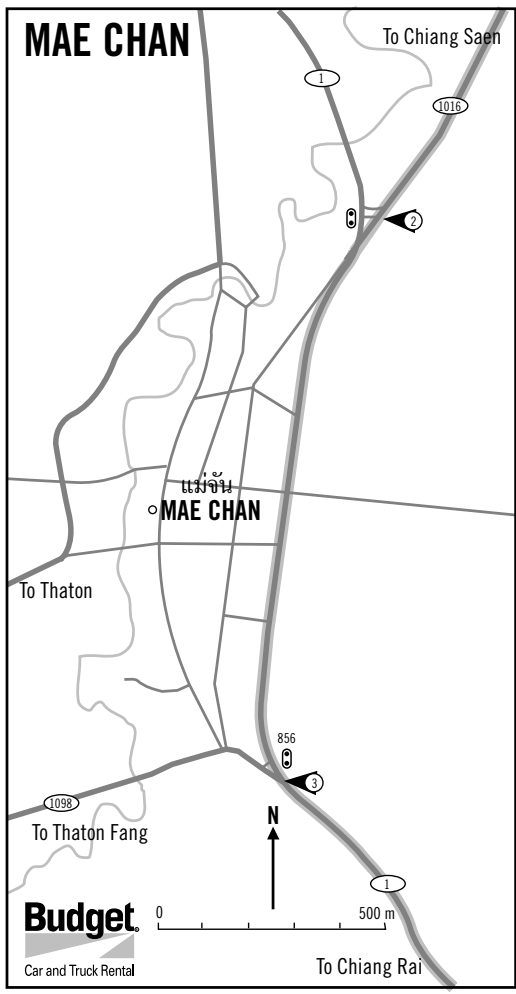
**5 POINTER FIVE**  
 Right turn to Mae Suai at T-junction of H1211KM30 with H118 at KM4

- KM19 Charin Garden Resort - fresh coffee and bakes
- KM107 Suan Thip Vana Resort - west side
- KM78 H120 from Phayao (section 5 joins route)
- KM72 basketware market
- KM62 Mae Khachan hot springs — another roadside tourist attraction. Restaurant at Wiang Doi Cottage opposite
- KM63 left turn (east) to Ban Huai Muang and upland valley with Lahu Villages (9kms) *4WD only!* Rustic accommodation at Trekker's Lodge
- KM16 right turn (west) to Wang Tarn Resort (6kms) — restaurant and accommodation
- KM16/14. left turn (east) to Wat Doi Saket — unusual temple murals

**6 POINTER SIX**  
 H118 intersects with H11— Chiang Mai Lampang Superhighway. Welcome back to Chiang Mai.

**ACCOMMODATION**

- Dusit Island Resort, Chiang Rai. Tel: (053) 744188, 715777 Fax: 715801
- Golden Triangle Inn (Budget Chiang Rai Office: Tel: 740442-3) Tel: (053) 711339, 716996 Fax: 713963
- Rimkok Resort Hotel, Chiang Rai. Tel: (053) 716445-60 Fax: 715859
- Wiang Inn Hotel, Chiang Rai. Tel: (053) 711533 Fax: 711877
- Wiang Come Hotel, Tel: (053) 711841-8 Fax: 712973
- Charin Garden Resort (H118 KM19) Tel: (053) 717272
- Suanthip Vana Resort (H118 KM107) Tel: 01 224 6985



STOP	NO PASSING
STOP (POLICE)	SLIPPERY ROAD
STEEP HILL	FALLING ROCKS

**For reservations, please contact your travel consultant or call Budget:**

**In the U.K.:**  
01800-181-181

**In the U.S.:**  
(800) 527-0700

**In Germany:**  
89 666-950

**In Australia:**  
13-28-48

**In Singapore:**  
532-4442

**In Thailand:**  
02 203-0250